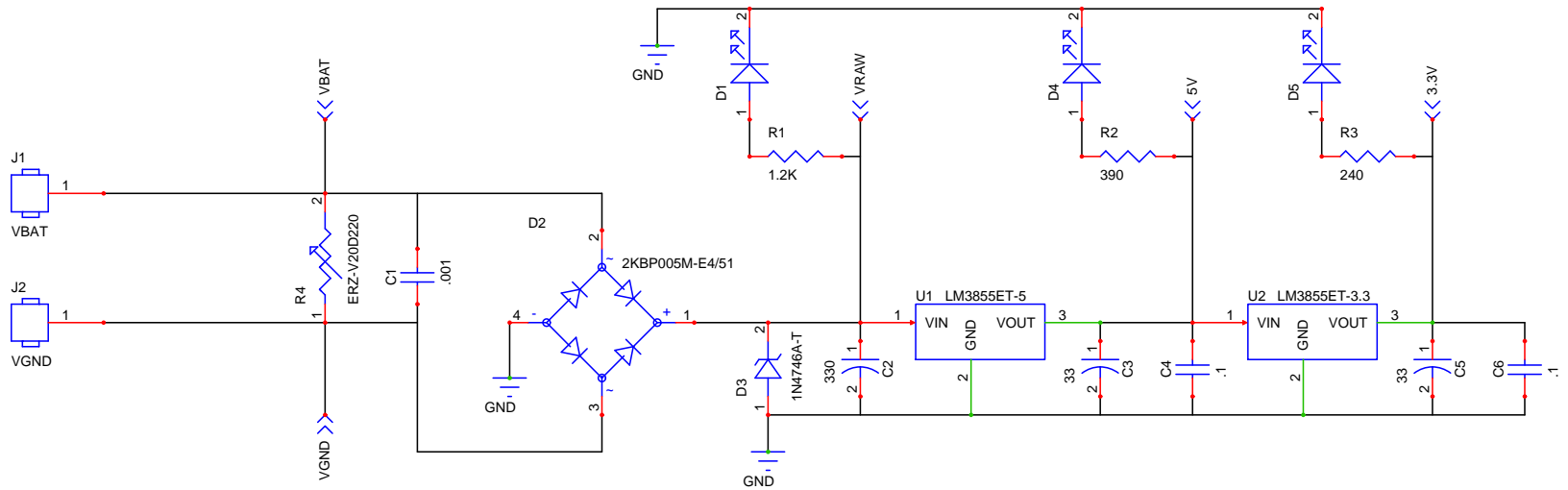
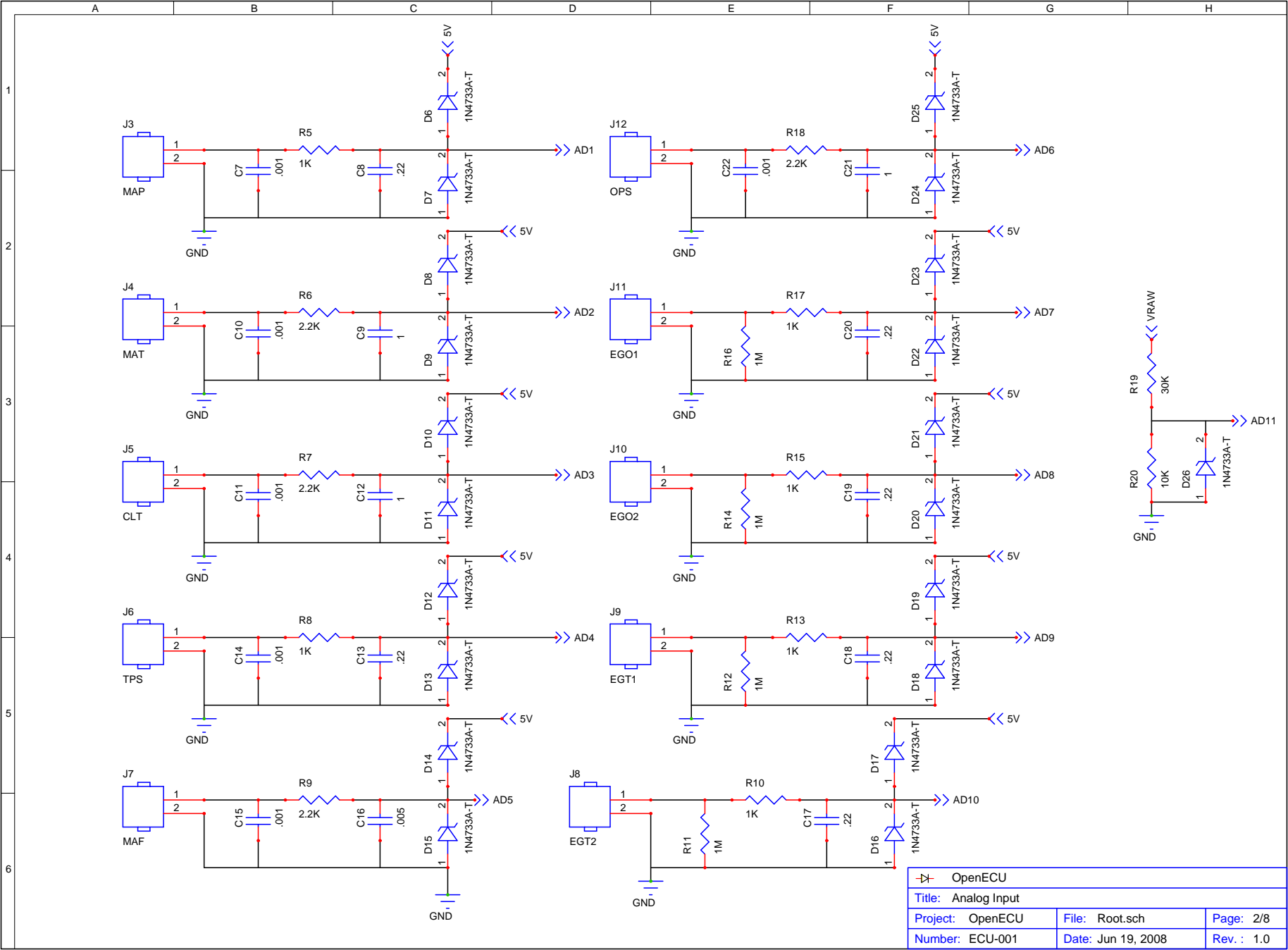


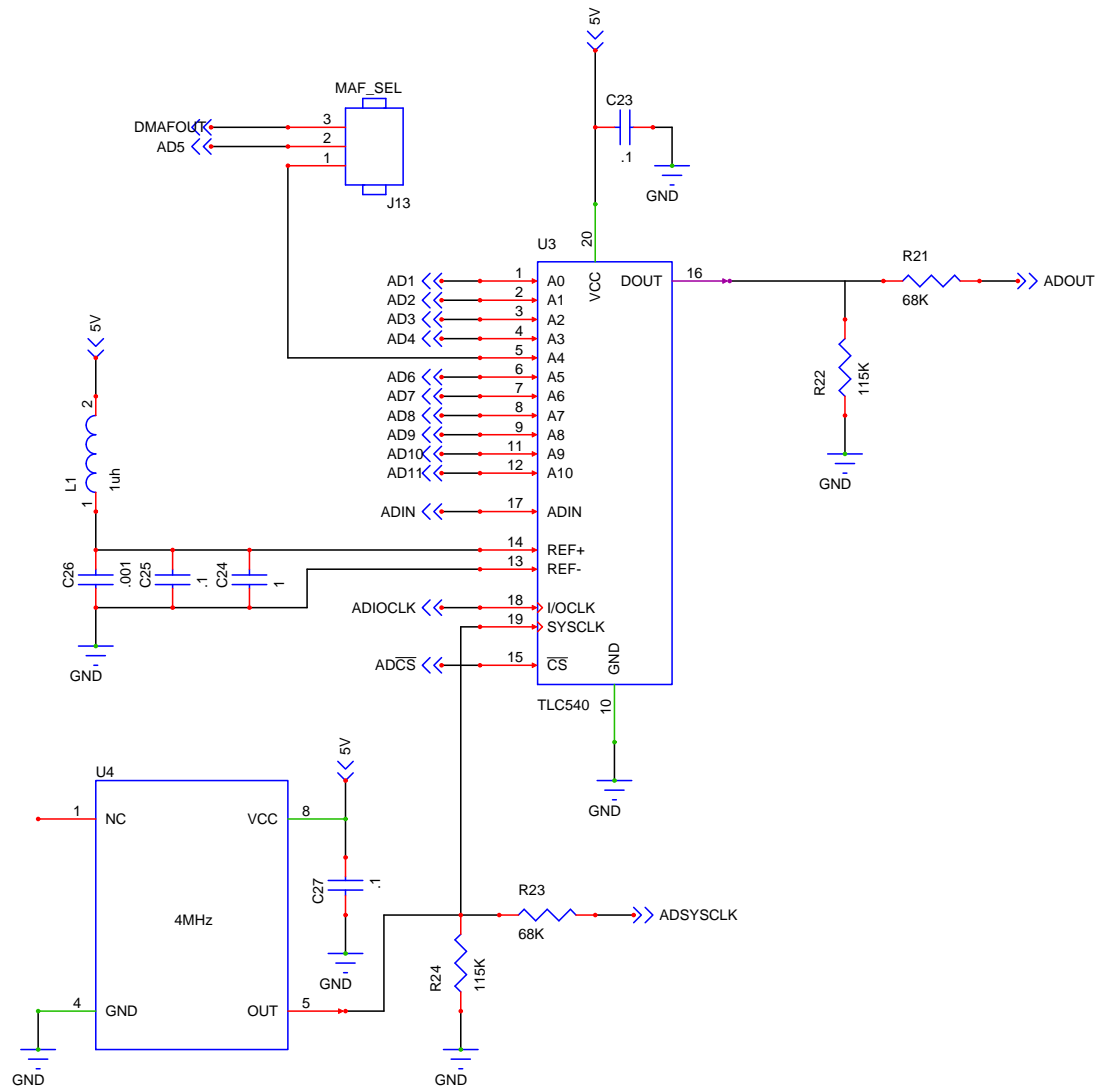
The OpenECU project is a work by Steven P. Donegan and Ian Molton and is covered by the Gnu Public License, Version 3. <http://www.gnu.org/licenses/gpl-3.0.txt>
 Copyright July 2, 2008. All rights reserved.



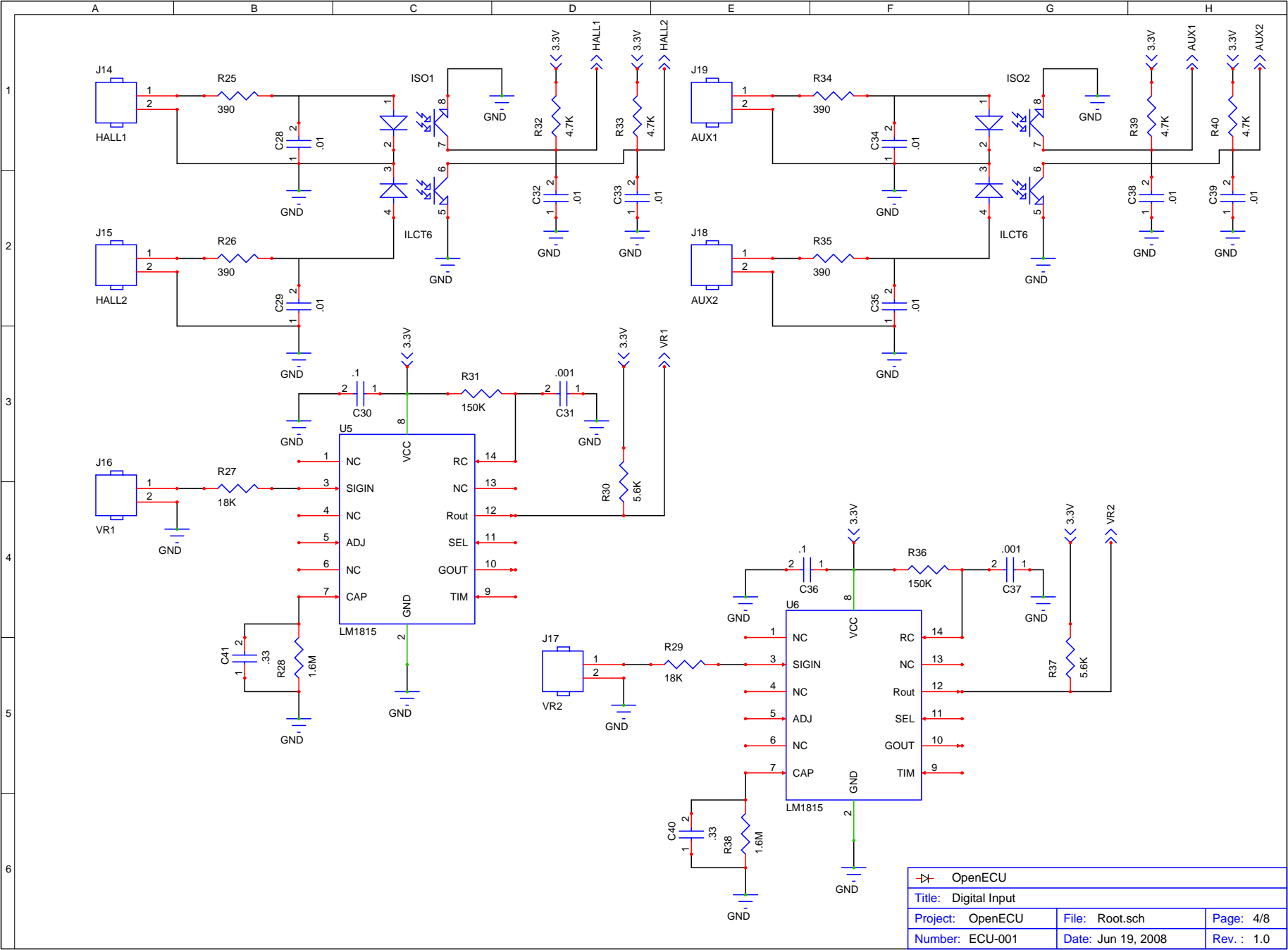
OpenECU		
Title: Power Supply		
Project: OpenECU	File: Root.sch	Page: 1/8
Number: ECU-001	Date: Jun 19, 2008	Rev.: 1.0



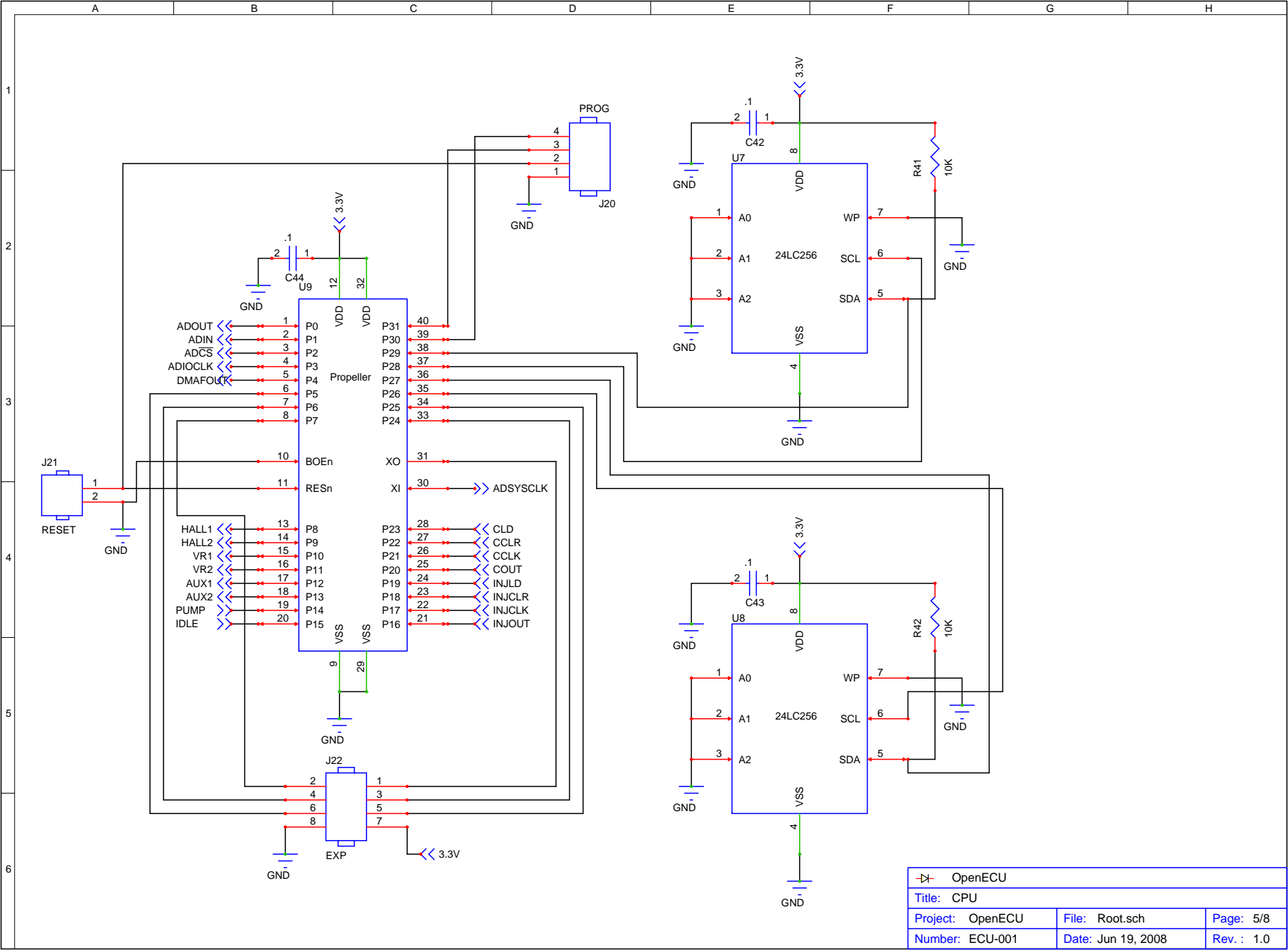
OpenECU		
Title: Analog Input		
Project: OpenECU	File: Root.sch	Page: 2/8
Number: ECU-001	Date: Jun 19, 2008	Rev.: 1.0



OpenECU		
Title: Analog to Digital Converter		
Project: OpenECU	File: Root.sch	Page: 3/8
Number: ECU-001	Date: Jun 19, 2008	Rev.: 1.0



OpenECU		
Title: Digital Input		
Project: OpenECU	File: Root.sch	Page: 4/8
Number: ECU-001	Date: Jun 19, 2008	Rev.: 1.0



OpenECU		
Title: CPU		
Project: OpenECU	File: Root.sch	Page: 5/8
Number: ECU-001	Date: Jun 19, 2008	Rev.: 1.0

